

Contact...

John Tomeny
603-643-3351
info@sassafras.com

Sassafras Software has a long tradition as an innovator and market leader in tool development for Software Asset Management (SAM). The pioneering KeyServer® product has evolved over 25 years since its initial release into an elegant, award-winning, unified tool set for Hardware and Software Asset Management. K2 is a winner of the CODiE Award for "Best Asset Management Solution".

K2-KeyAuditor & KeyServer is designed for today's complex physical, virtual, and cross-platform computing environments where it has become a critical component of license compliance and software cost reduction efforts in some of the largest corporate, educational, and government enterprises worldwide. Sassafras enjoys broad support from software publishers, including many technical partners that rely exclusively on K2 technology.

K2 KeyAuditor & KeyServer

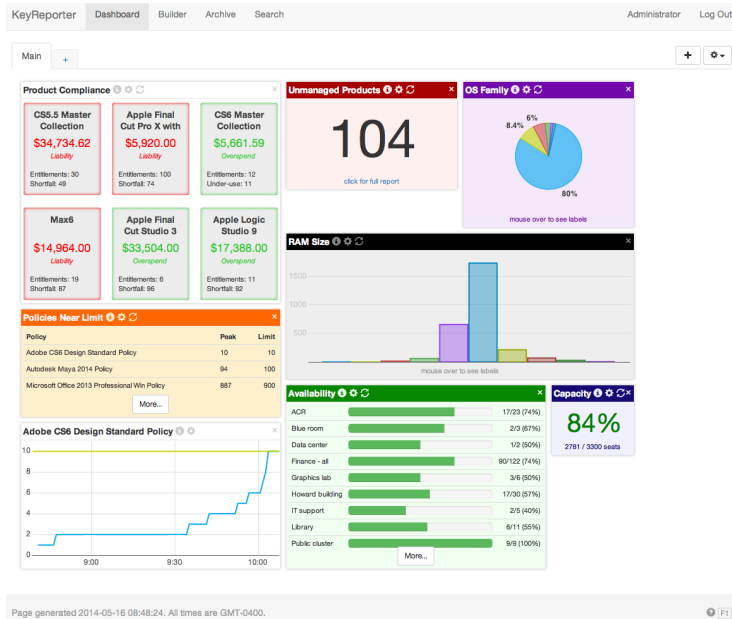
Sassafras K2 version 7.2 Released

New customizable web based Dashboards

Hanover, NH - May 30, 2014: Sassafras Software, a pioneer in Software Asset Management (SAM) and IT Asset Management (ITAM), has released a major upgrade of its award-winning product, K2 - KeyAuditor & KeyServer. Version 7.2 adds support for user based license metrics, and it introduces an integrated web-based reporting dashboard that puts important data summarization at your fingertips.

Dashboard

New customizable dashboards give quick insight into important metrics without the need for running reports. Over 50 widgets show targeted, concise, actionable information from K2's data. Now you can easily monitor all key performance indicators in one place. Each Administrator can focus on just the specific information that is relevant to their job.



Example of a custom dashboard configuration

Each dashboard widget links to a more detailed report that can be viewed in a web browser or within KeyConfigure. To extract specific detailed information, you can also build your own reports using parameters and filters. Reports can be run and configured entirely in a web browser, while tight integration with KeyConfigure, the dedicated administrative console, lets these same reports interact directly with all aspects of K2's management configuration interface.

K2 KeyAuditor & KeyServer

Sassafras has been instrumental in driving the development of software licensing standards for over two decades. Members of the Sassafras team were among the coauthors of the LS-API specification in the early 1990's. In recent years, Sassafras personnel have coauthored the ISO/IEC 19770-2 Software ID (SWID) standard and the ISO/IEC 19770-3 Software Entitlement standard.

Sassafras Software has been recognized by the world's leading IT Asset Management associations with the highest levels of professional recognition in the IT Asset Management industry.

K2 Supported Platforms:

Windows, Macintosh, Linux, NetWare, Solaris, RDS/Citrix, Virtual Environments

More information:

*www.sassafras.com
603-643-3351*

User based licensing metrics

K2 has always supported common user based license metrics by allowing integration with authentication methods such as Active Directory. Version 7.2 adds more direct support for User based licensing metrics through a Users window where licensing can be assigned to specific users in much the same way that licenses are assigned to specific computers in the Computers window. Software usage and compliance reporting for this license metric can then be directly reconciled against the corresponding purchase records.

Computer Availability Maps

Organizations that manage computer labs can quickly and easily create graphic web pages that display maps showing computer availability. In addition to displaying the real-time status of each computer, computer maps also display the operating system and a list of the installed software on each computer. Maps can be created in any web browser with no additional tools and the resulting web page can be published from the built-in KeyServer web server or via a redirect from elsewhere.

Award Winning Software

Winner of a coveted SIIA CODiE award for "Best Asset Management Solution," and recognized by the BSA, K2 KeyAuditor & KeyServer tracks and controls access to hardware and software assets with detailed entitlement reconciliation, allocation, and usage reporting for any combination of physical, virtual, and thin client computers running Windows, Macintosh, Linux, or Solaris operating systems.

Customizable dashboards and reports provide integrated views of hardware and software asset allocation, software usage patterns, and license compliance. K2's data can be easily integrated with other IT Management and Procurement systems for customized reports that combine data from multiple sources. K2 scales from managing small lab facilities with just a few dozen computers to global enterprises managing tens of thousands of computers across global networks.

Availability and Pricing

K2 version 7.2 began shipping on May 30, 2014. Customers who purchased K2 after May 1, 2014, and customers with a current Upgrade Subscription Plan, will receive K2 version 7.2 at no charge. Pricing is based on the number of client devices placed under K2 management. K2 is licensed as a complete package including all components and basic technical support at no additional charge. Discounts are available for academic and non-profit organizations.

Additional information and evaluation copies are available by contacting:

Sassafras Software Inc.
603-643-3351
info@sassafras.com
<http://www.sassafras.com/>