

## PRODUCT BRIEF

*K2 is an integrated software asset management solution that enables IT managers to automatically audit, manage, and control their software and hardware assets. Sassafras first built KeyServer for Macintosh in 1989 and extended support to Windows in 1995. Presently, Sassafras is shipping a beta client agent for Linux.*

*In addition to comprehensive hardware/software auditing, K2 will also control access to licensed/unlicensed software and run detailed deployment and usage reports for an enterprise-level organization or for specific departments.*

*K2 works well with Adobe License Manager and other publisher-embedded licensing tools.*

### New in Version 6.1:

- *K2 Web Reports: Scheduled Reports and Web Console*
- *Rules-based Filtering for Hands-free Management*
- *Role- and Scope-based Administration*
- *Enhanced Integration with Active Directory*
- *Rapid Client Deployment with ARD and other tools*
- *Universal Binary Support and Dashboard Widget.*

### Supported Host & Clients:

*Macintosh, Windows, NetWare, Linux, BSD Unix.*

### Contacting Sassafras

Download Evaluation copy:  
<http://www.sassafras.com>

Technical Support is free:  
[support@sassafras.com](mailto:support@sassafras.com)  
603-643-3351

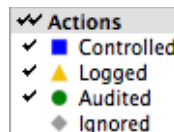
Sales & Information:  
[sales@sassafras.com](mailto:sales@sassafras.com)  
603-643-3351

## K2 - KeyAuditor & KeyServer

### Integrated Software Auditing & License Management

#### Asset Management

- Complete software inventories: identifies tens-of-thousands of Macintosh and Windows software applications
- Hardware audits: OS details, computer configuration profiles, plus computer asset tag and location data
- Automatic, incremental delta audits and configurable reports
- Web-based and Console-based reporting
- Hundreds of standard built-in life-cycle management reports
- ODBC-compliant customizable external reports
- Report scheduling, Tiger Widget reporting tool, and RSS feeds
- Hosted process on Mac OS X, Windows, Linux, or NetWare

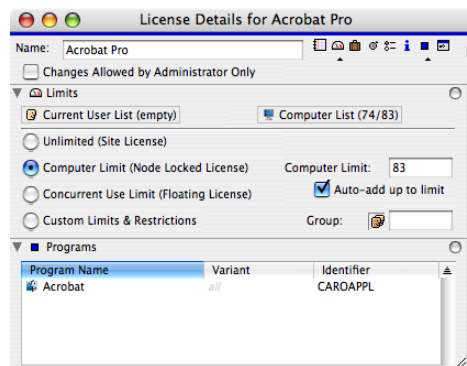


#### Usage Management

- Support multiple user-groups and divisions of computers
- Settings to control, log, or ignore software usage are configurable for each software application
- Manage, or track usage for, different software versions discretely
- Managed and tracked applications are location independent – can be installed anywhere
- Deny access to unauthorized software or users
- Scheduled usage and reservations
- Software deployment & usage reports

#### License Management

- Central deployment and management of software licenses
  - Unlimited site licenses
  - Single computer (node-locked) licenses
  - Concurrent use (floating) licenses
  - Custom limits & restrictions
- Multiple license profiles for each program
- Manage separate software versions
- Reclaim and redeploy abandoned software licenses
- Extensive License Compliance analysis & reports



#### Help Desk Management

- Hardware audits: configuration and IT asset details
- Role- and Scope-based Administration
- Tiger Widget, Web reports & RSS report feeds

#### Integration with other IT Management Tools

- Supports all major third-party authentication servers
- Extensible reporting with any ODBC-compliant reporting tools
- Integrated with upcoming OpenITAM project: <http://www.openitam.org/>